



# CORPORATE PARENTING PANEL

**MONDAY 14 APRIL 2008**

**6.00 PM**

**PANEL AGENDA (ADVISORY)**

**COMMITTEE ROOM 3  
HARROW CIVIC CENTRE**

**MEMBERSHIP (Quorum 3)**

**Chairman: Councillor Janet Mote**

**Councillors:**

**Mrs Myra Michael  
Paul Osborn  
Eric Silver**

**Mrs Margaret Davine  
Mitzi Green**

**Reserve Members:**

1. Chris Mote
2. Mrs Vina Mithani
3. Julia Merison
4. Mark Versallion

1. B E Gate
2. Raj Ray

**Issued by the Democratic Services Section,  
Legal and Governance Services Department**

**Contact: Maureen O'Sullivan, Democratic Services Officer  
Tel: 020 8424 1323 E-mail: maureen.osullivan@harrow.gov.uk**

***NOTE FOR THOSE ATTENDING THE MEETING:  
IF YOU WISH TO DISPOSE OF THIS AGENDA, PLEASE LEAVE IT BEHIND AFTER THE MEETING.  
IT WILL BE COLLECTED FOR RECYCLING.***

**HARROW COUNCIL**

**CORPORATE PARENTING PANEL**

**MONDAY 14 APRIL 2008**

**AGENDA - PART I**

1. **Attendance by Reserve Members:**

To note the attendance at this meeting of any duly appointed Reserve Members.

Reserve Members may attend meetings:-

- (i) to take the place of an ordinary Member for whom they are a reserve;
- (ii) where the ordinary Member will be absent for the whole of the meeting; and
- (iii) the meeting notes at the start of the meeting at the item 'Reserves' that the Reserve Member is or will be attending as a reserve;
- (iv) if a Reserve Member whose intention to attend has been noted arrives after the commencement of the meeting, then that Reserve Member can only act as a Member from the start of the next item of business on the agenda after his/her arrival.

2. **Declarations of Interest:**

To receive declarations of personal or prejudicial interests, arising from business to be transacted at this meeting, from:

- (a) all Members of the Panel;
- (b) all other Members present in any part of the room or chamber.

3. **Arrangement of Agenda:**

To consider whether any of the items listed on the agenda should be considered with the press and public excluded on the grounds that it is thought likely, in view of the nature of the business to be transacted, that there would be disclosure of confidential information in breach of an obligation of confidence or of exempt information as defined in Part 1 of Schedule 12A to the Local Government Act 1972.

Enc. 4. **Minutes:** (Pages 1 - 2)

That the minutes of the meeting held on 14 January 2008 be taken as read and signed as a correct record.

5. **Public Questions:**

To receive questions (if any) from local residents or organisations under the provisions of Advisory Panel and Consultative Forum Procedure Rule 16 (Part 4E of the Constitution).

6. **Petitions:**  
To receive petitions (if any) submitted by members of the public/Councillors under the provisions of Advisory Panel and Consultative Forum Procedure Rule 14 (Part 4E of the Constitution).
7. **Deputations:**  
To receive deputations (if any) under the provisions of Advisory Panel and Consultative Forum Procedure Rule 15 (Part 4E of the Constitution).
- Enc. 8. **Activity and Performance re Children Looked After and Children on the Child Protection Register:** (Pages 3 - 20)  
Information report of the Corporate Director, Children's Services.
- Enc. 9. **Education Champions for Children Looked After:** (Pages 21 - 24)  
Information report of the Corporate Director, Children's Services.
10. **Any Other Urgent Business:**  
Which cannot otherwise be dealt with.

**AGENDA - PART II - NIL**

This page is intentionally left blank

## CORPORATE PARENTING PANEL

14 JANUARY 2008

Chairman: \* Councillor Janet Mote

Councillors: \* Mrs Margaret Davine \* Eric Silver  
\* Mitzi Green \* Mark Versallion (4)  
\* Paul Osborn

\* Denotes Member present  
(4) Denotes category of Reserve Member

**PART I - RECOMMENDATIONS - NIL****PART II - MINUTES**21. **Attendance by Reserve Members:**

**RESOLVED:** To note the attendance at this meeting of the following duly appointed Reserve Member:-

<u>Ordinary Member</u>	<u>Reserve Member</u>
Councillor Mrs Myra Michael	Councillor Mark Versallion

22. **Declarations of Interest:**

**RESOLVED:** To note that there were no declarations of interests made by Members in relation to the business transacted at this meeting.

23. **Arrangement of Agenda:**

**RESOLVED:** That all items be considered with the press and public present.

24. **Minutes:**

**RESOLVED:** That the minutes of the meeting held on 8 October 2007 be taken as read and signed as a correct record.

25. **Public Questions:**

**RESOLVED:** To note that no public questions were received at this meeting under the provisions of Advisory Panel and Consultative Forum Procedure Rule 16 (Part 4E of the Constitution).

26. **Petitions:**

**RESOLVED:** To note that no petitions were received at this meeting under the provisions of the Advisory Panel and Consultative Forum Procedure Rule 14 (Part 4E of the Constitution).

27. **Deputations:**

**RESOLVED:** To note that no deputations were received at this meeting under the provisions of Advisory Panel and Consultative Forum Procedure Rule 15 (Part 4E of the Constitution).

28. **Harrow Position in relation to "Care Matters- Time for Change" White Paper:**

The Panel received an information report of the Corporate Director, Children's Services, setting out Harrow's current position in relation to the Government White Paper "Care Matters: Time for Change". An officer reported that, while Harrow was already operating some of the provisions of the White Paper, there were likely to be cost implications, the extent of which would depend on the amount of Government funding attached to the implementation of legislation. No details were currently known about this or about the timing of any legislation, but officers would keep the Panel informed of developments. Officers agreed to include a glossary of acronyms and terms in future reports.

**RESOLVED:** That the report be noted.

29. **Activity and Performance:**

The Panel received an information report of the Corporate Director, Children's Services, setting out key data relating to Children Looked After (CLA) and Children on the Child Protection Register (CPR), including key performance indicators up to the end of November 2007. The Panel noted the very good performance in several areas, including in the health of CLA, the stability of placements and the participation of CLA in reviews. Officers reported that the proportion of adoptions of CLA had increased since the report had been written, and this also demonstrated very good performance.

Officers agreed to provide an annual comparison with the performance of other boroughs and to repeat an analysis of carers' criteria relating to factors such as culture and religion.

**RESOLVED:** That the report be noted.

(Note: The meeting having commenced at 6.05 pm, closed at 7.15 pm)

(Signed) COUNCILLOR JANET MOTE  
Chairman



Committee:	Corporate Parenting
Date:	14 <sup>th</sup> April 2008
Subject:	INFORMATION REPORT – Activity and Performance
Responsible Officer:	Director of Children’s Services
Portfolio Holder:	Cllr Janet Mote
Exempt:	No
Enclosures:	CLA & CPR Activity and Performance Report

## 1. Summary

This report sets out key data relating to Children Looked After (CLA) and Children on the Child Protection Register (CPR), plus key performance indicators to the end of February 2007.

Key points for this quarter:

- None of the indicators relating to CLA and CPR are currently red – compared with three at the end of last year
- Participation of CLA in their reviews has reached a new high level of 95%
- through careful management and improved team stability, a much more balanced position has been achieved for CPR indicators
- the proportion of male CLA compared with female has increased since our monitoring began – 55% male:45% female in May 2005 to 65%:35% in February 2008. This is partly, but not fully, explained by increase in unaccompanied asylum seekers, who tend to be male
- there are now more in-house than agency foster placements, which reflects continued improvements in the Family Placement Service

**FOR INFORMATION**

## **2. Financial Implications**

No significant financial implications.

## **3. Performance Issues**

This report provides latest performance on statutory indicators for children's social care. The Panel may wish to provide direction following an analysis of current performance.

## **4. Contacts**

David Harrington, Service Manager, Performance  
020 8424 9248 david.harrington@harrow.gov.uk

Dipika Patel, Senior Performance Officer, Children's Social Care  
020 8424 9258 dipika.patel@harrow.gov.uk





# Corporate Parenting

14<sup>th</sup> April 2008

**CLA & CPR Activity  
To end of February 2008**

# CONTENTS

1) Safety of Vulnerable Children (CLA).....	3
2) CLA Age and Gender Breakdown .....	4
3) CLA by Ethnicity.....	5
4) CLA BY Placement Type.....	6
5) CLA other Data.....	7
6) Breakdown of Category of Need .....	8
7) Safety of vulnerable children (CPR).....	9
8) CPR by Age and Gender .....	10
9) CPR by Ethnicity .....	11
10) CPR Nature of Abuse .....	12
11) Duration of Children on the Protection Register .....	13
12) Overview of Key Performance Indicators as at 31 <sup>st</sup> March 2007.....	14

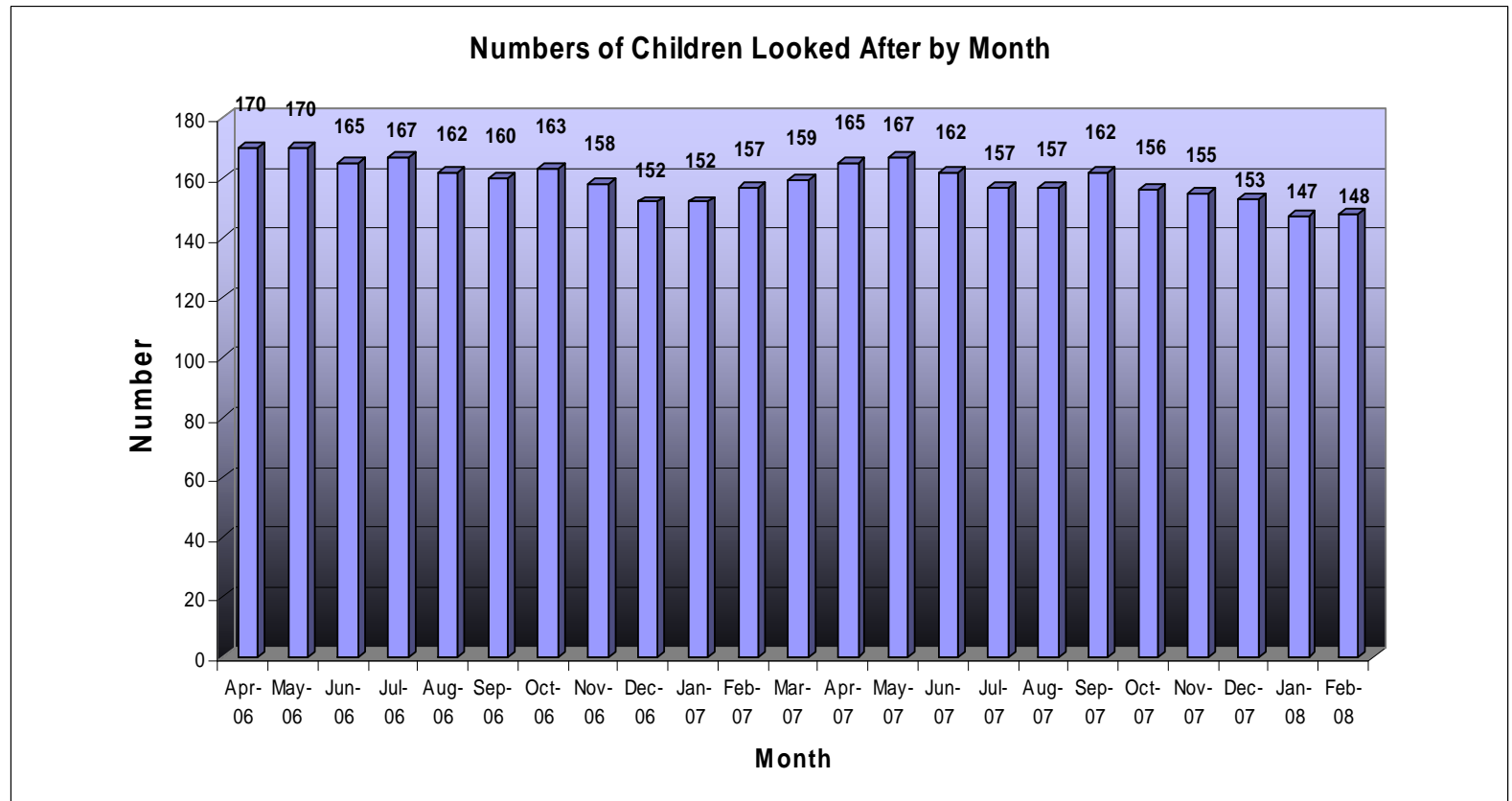
o

# 1) Safety of Vulnerable Children (Children Looked After)

There were **148** children looked after in Harrow on 29<sup>th</sup> February 2008.

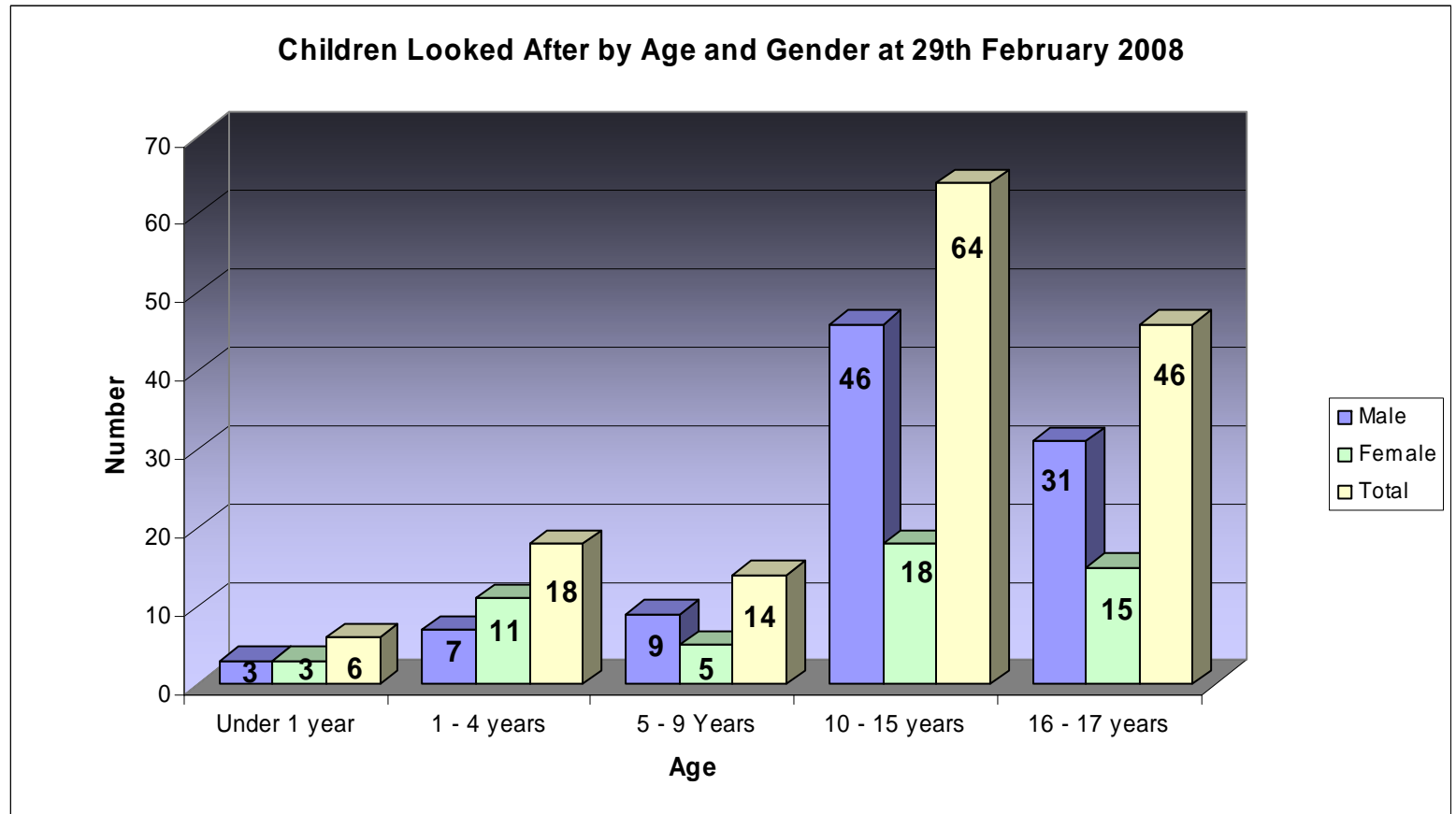
The bar chart below shows the number of children looked after by month from April 2006 to February 2008.

Month	No. of CLA
Apr-06	170
May-06	170
Jun-06	165
Jul-06	167
Aug-06	162
Sep-06	160
Oct-06	163
Nov-06	158
Dec-06	152
Jan-07	152
Feb-07	157
Mar-07	159
Apr-07	165
May-07	167
Jun-07	162
Jul-07	157
Aug-07	157
Sep-07	162
Oct-07	156
Nov-07	155
Dec-07	153
Jan-08	147
Feb-08	148



## 2) CLA Age and Gender Breakdown for February 2008

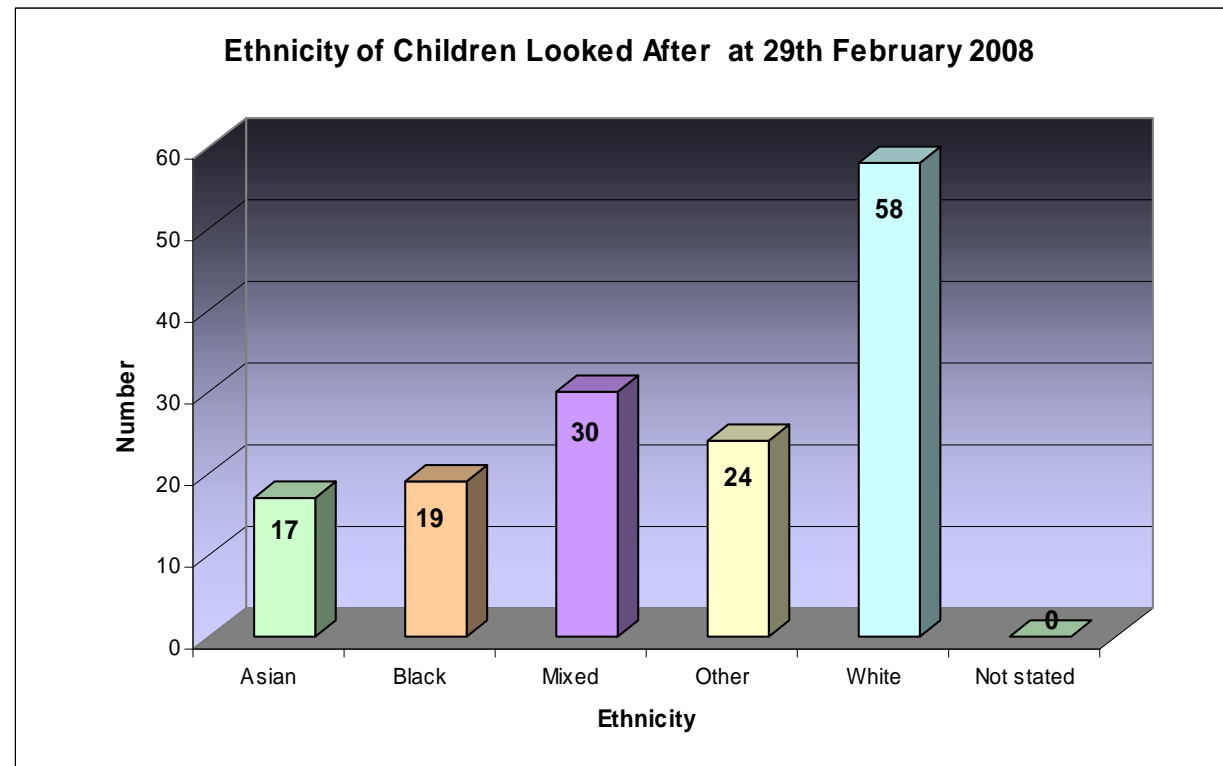
Age	Male	Female	Total
Under 1 year	3	3	6
1 - 4 years	7	11	18
5 - 9 Years	9	5	14
10 - 15 years	46	18	64
16 - 17 years	31	15	46
<b>Total</b>	<b>96</b>	<b>52</b>	<b>148</b>



### 3) CLA by Ethnicity

Below is the breakdown of the ethnicity of those children who were looked after on 29<sup>th</sup> February 2008.

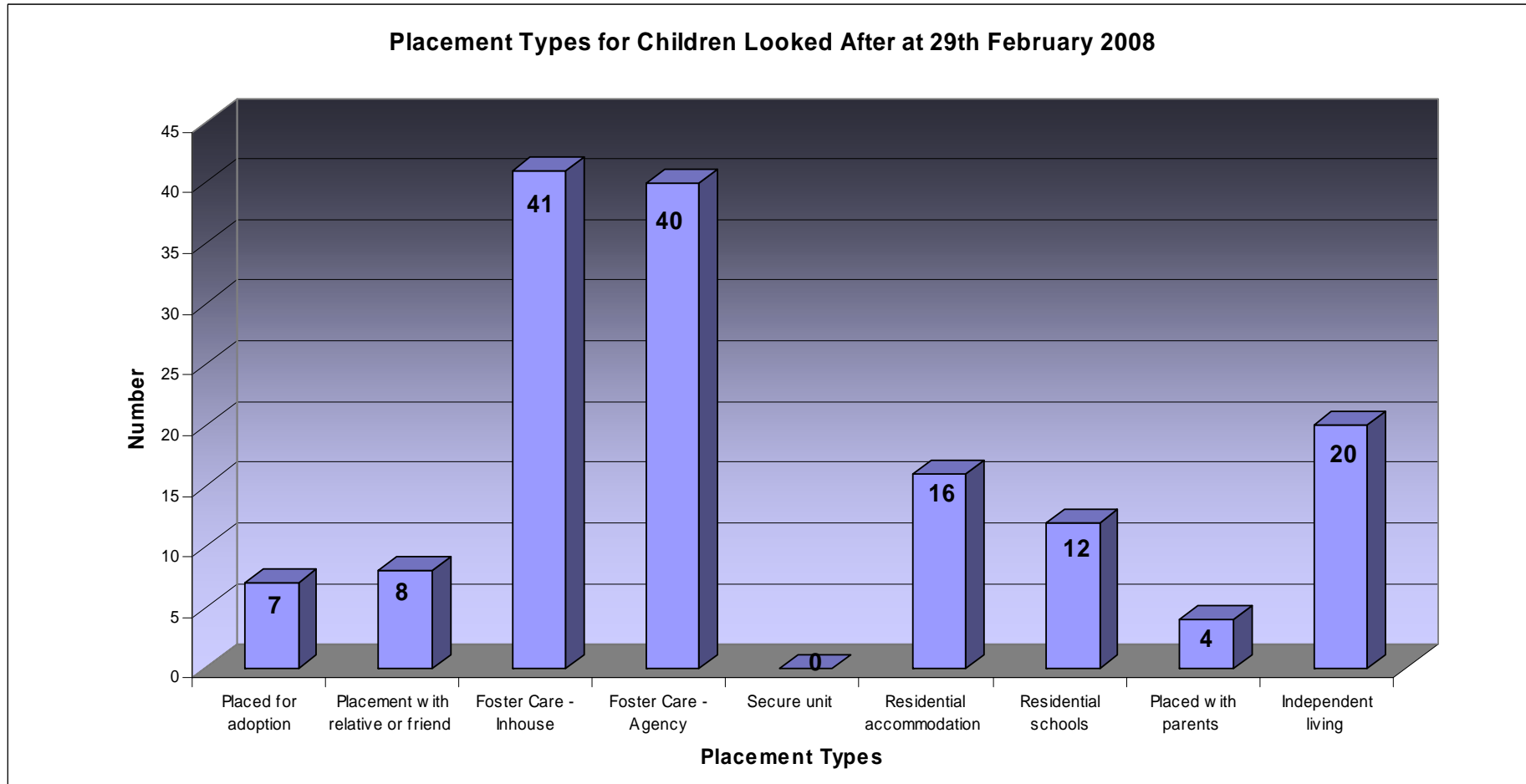
Ethnicity	No. of CLA
Asian	17
Black	19
Mixed	30
Other	24
White	58
Not stated	0



#### 4) CLA by Placement Type at 29<sup>th</sup> February 2008

Placement Type	No. of CLA
Placed for adoption	7
Placement with relative or friend	8
Foster Care - Inhouse	41
Foster Care - Agency	40
Secure unit	0
Residential accommodation	16
Residential schools	12
Placed with parents	4
Independent living	20

10



## Children Looked After - Other Data as at 29<sup>th</sup> February 2008:

Number of Children Placed Out of Borough **66**

### Breakdown Of types of Residential Placements:

304 Honeypot Lane: **6**

Other Childrens Homes: **9**

Supportive Residential placements (pre –independent living): **1**

Residential Schools: **12**

Social Work Allocation: **98.65%**

Prediction for Adoptions: At present 7 children are in preadoptive placements.

### CLA GCSE Results - 2007:

Attained at least 1 A\* - G: **46.15%**

Attained 5 or more A\* - G **43.15%**

Attained 5 or more A\* -C **5.38%**

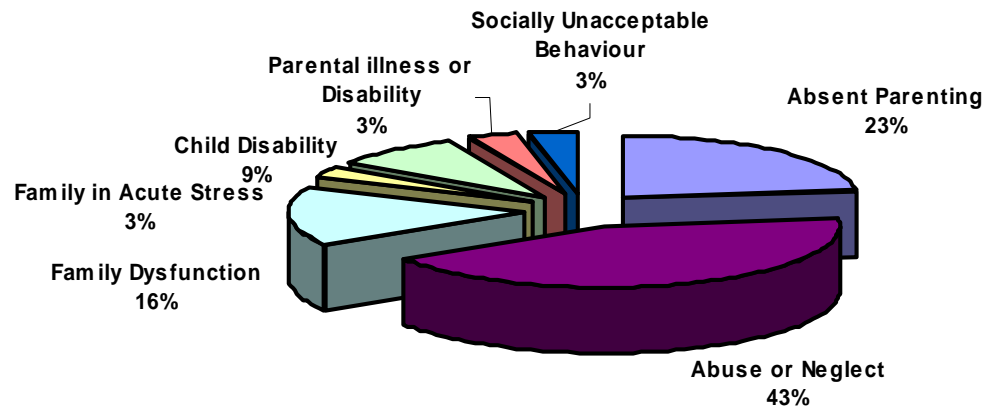
11

## 5) Breakdown of Category of Need

The breakdown of category of need recorded when a child becomes looked after.

Category of Need	Number
Absent Parenting	34
Abuse or Neglect	63
Family Dysfunction	23
Family in Acute Stress	4
Child Disability	13
Parental illness or Disability	5
Socially Unacceptable Behaviour	5
Unknown	1

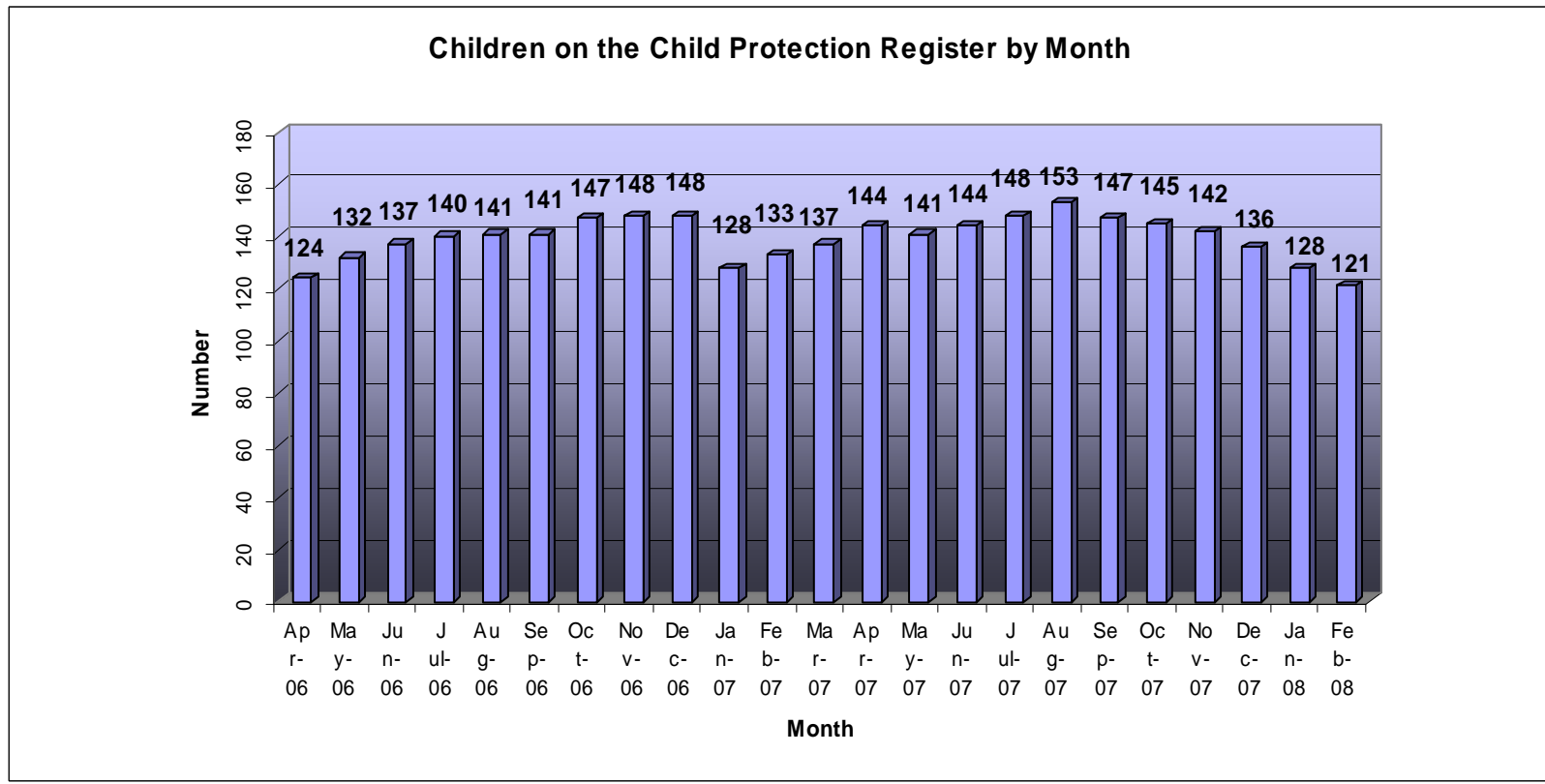
Children Looked After at 29th February 2008 by Category of Need





6) CPR by month April 2006 to February 2008

13

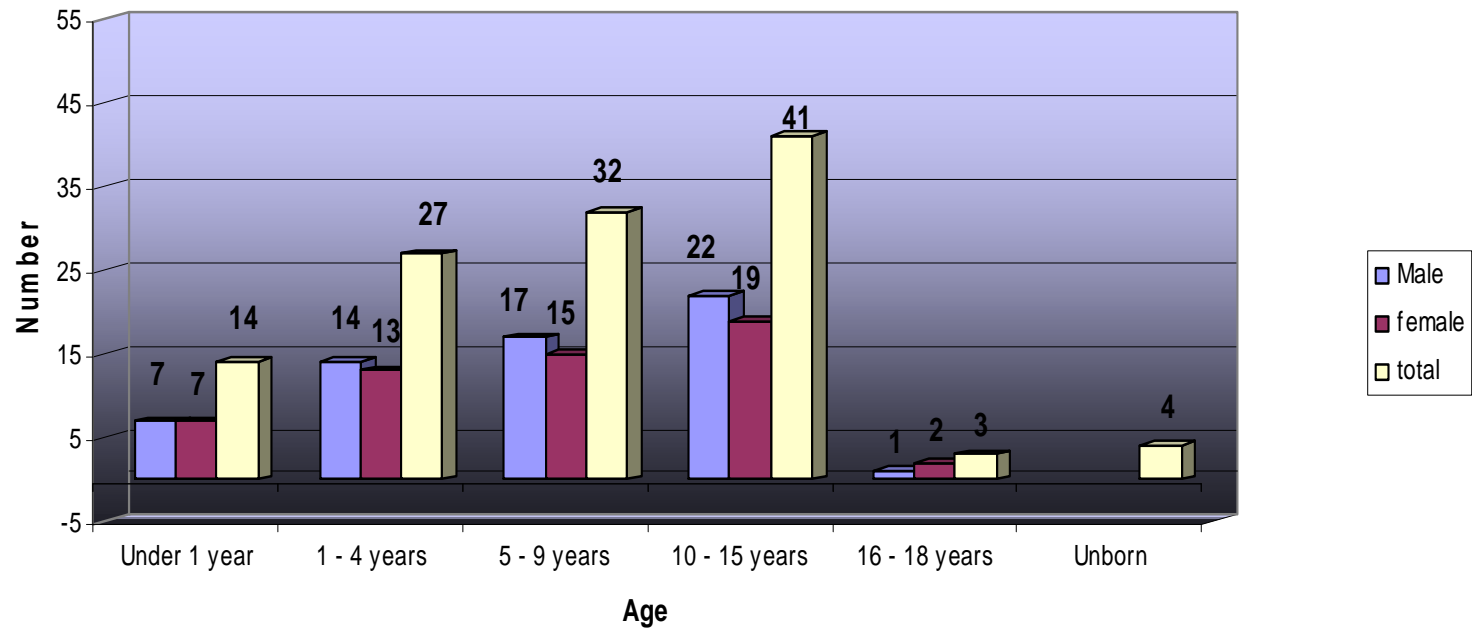


Month	CPR
Apr-06	124
May-06	132
Jun-06	137
Jul-06	140
Aug-06	141
Sep-06	141
Oct-06	147
Nov-06	148
Dec-06	148
Jan-07	128
Feb-07	133
Mar-07	137
Apr-07	144
May-07	141
Jun-07	144
Jul-07	148
Aug-07	153
Sep-07	147
Oct-07	145
Nov-07	142
Dec-07	136
Jan-08	128
Feb-08	121

## 7) CPR by Age and Gender

Age	Male	Female	Total
Under 1 year	7	7	14
1 - 4 years	14	13	27
5 - 9 years	17	15	32
10 - 15 years	22	19	41
16 - 18 years	1	2	3
Unborn			4
<b>Total</b>	<b>61</b>	<b>56</b>	<b>121</b>

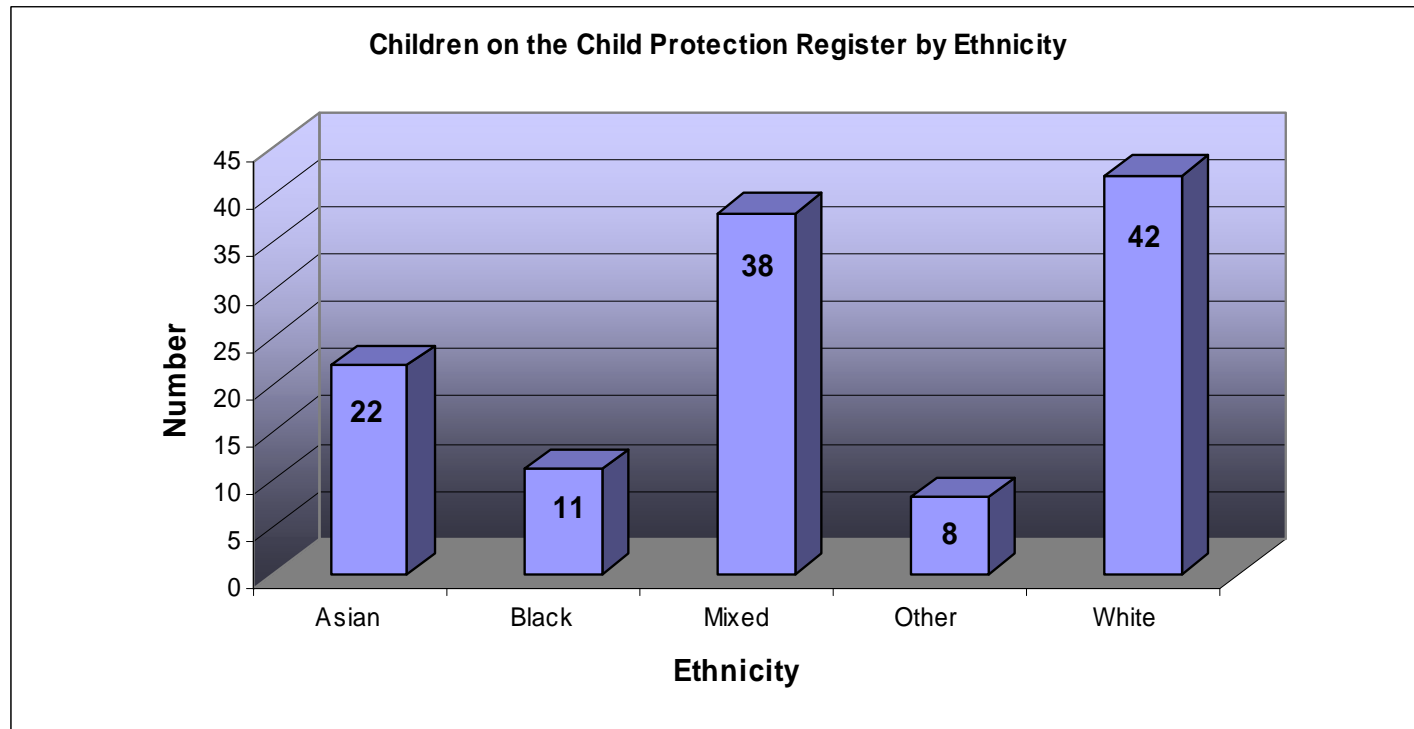
Children on the Child Protection Register by Age and Gender



## 7) CPR by Ethnicity

Breakdown of ethnicity of those children on the Child Protection Register as at 29<sup>th</sup> February 2008

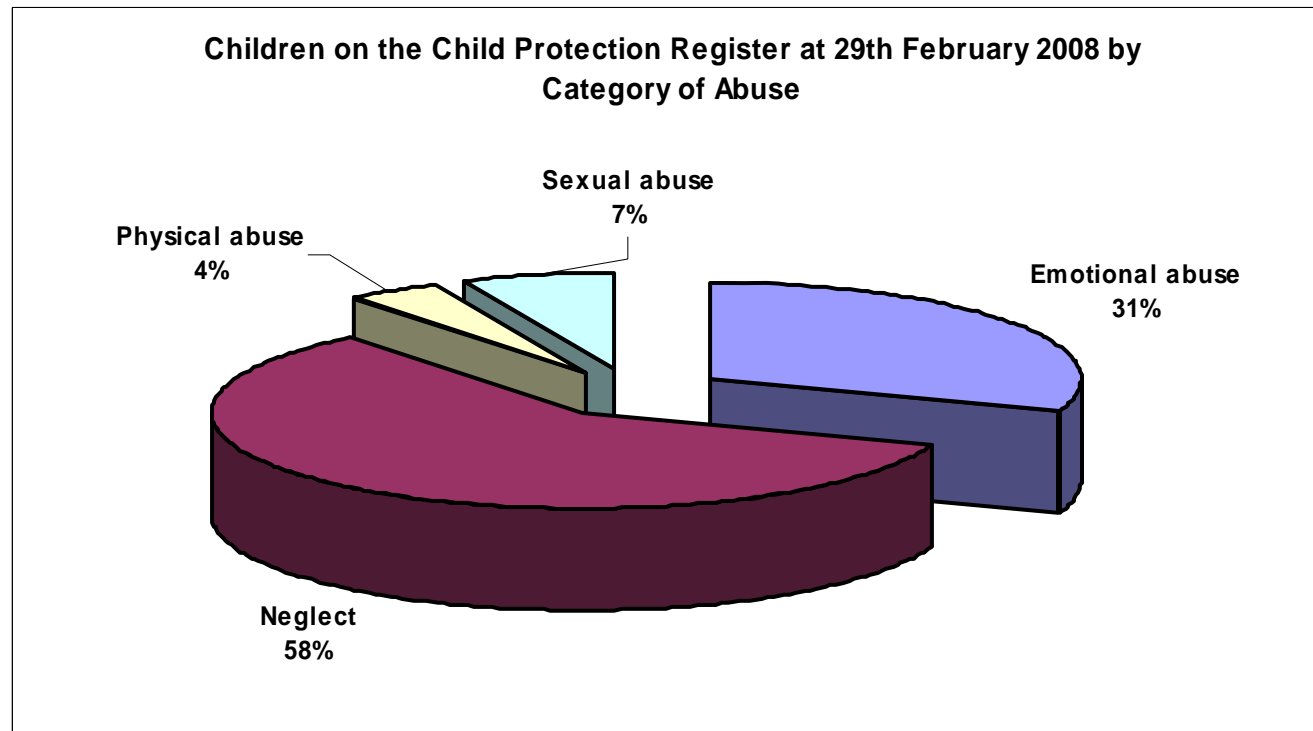
Ethnicity	Count
Asian	22
Black	11
Mixed	38
Other	8
White	42



## 9) CPR by Nature of Abuse

Breakdown of registration categories of those children on the Child Protection Register as at 29<sup>th</sup> February 2008

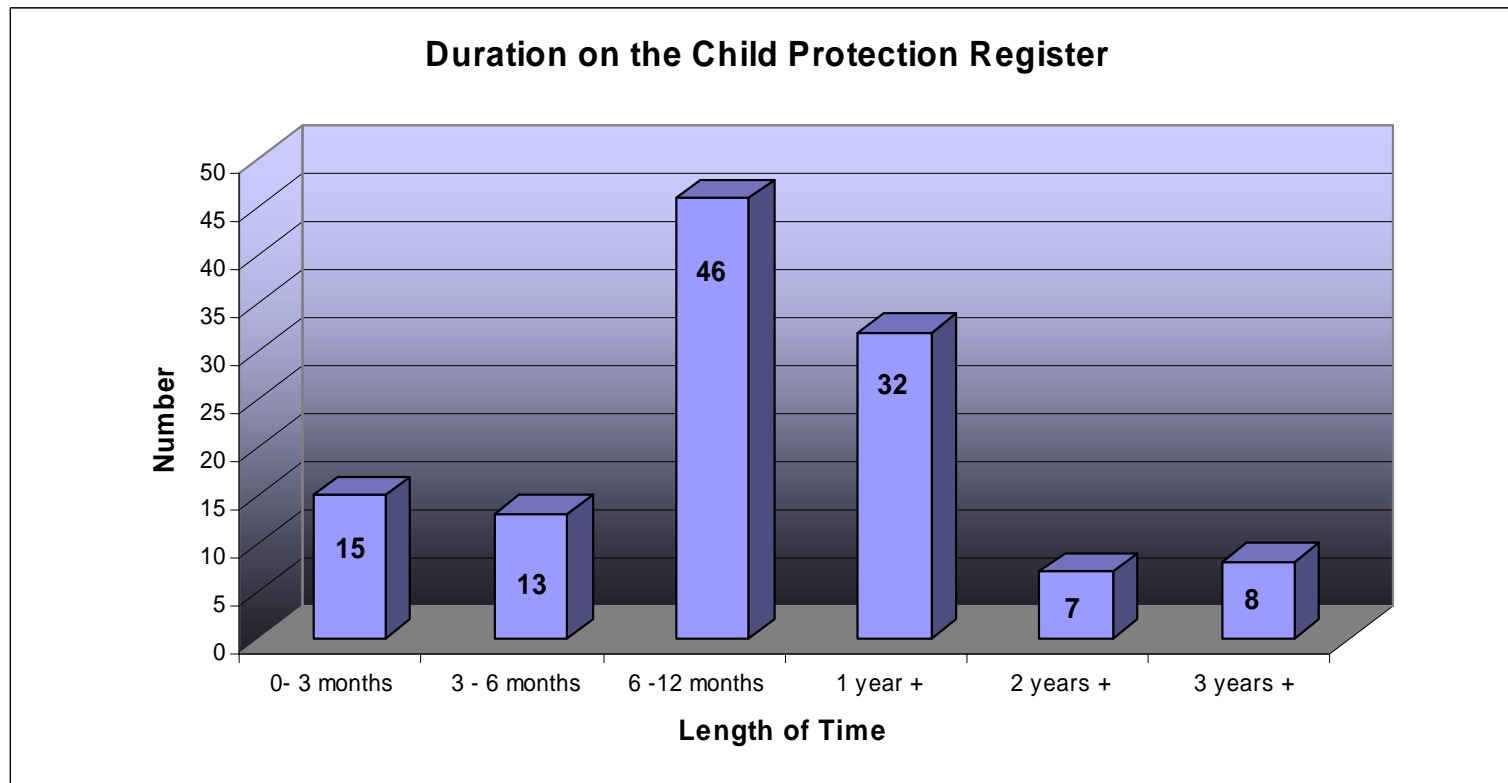
Registration Category Count	
Emotional abuse	37
Neglect	71
Physical abuse	5
Sexual abuse	8



## 10) Duration of Children on the Protection Register

This table shows the number of children on the child protection register by length of time since registration at 29<sup>th</sup> February 2008.

Registered	Number
0- 3 months	15
3 - 6 months	13
6 -12 months	46
1 year +	32
2 years +	7
3 years +	8



## 11) Overview of Key Performance Indicators with performance update January 2008

Domain	PAF	BVPI	Indicator	March 2007	Feb 08	Comments
A. Being Healthy	C19		<b>Health of children looked after</b> - The average of the percentages of children looked after continuously for at least 12 months, and who had a dental check and a medical assessment during the previous 12 months.	88.00%	75.50%	Performance is showing as slightly low, this is due to some delays in entering data and this is being followed up. We have met our target for 2007-08, which is 95.3% and this is brilliant performance! (The return period for this indicator is at the end of september.)
B. Staying safe	A3		<b>Re-registrations on the Child Protection Register</b> - The percentage of children registered during the year on the Child Protection Register who had been previously registered.	10.62%	16.09%	Measures are in place to ensure that children have adequate monitoring and support in place following de-registration. The drop in performance this year was due to re-registration of some large sibling groups.
	C24		<b>Children looked after absent from school</b> - The percentage of children who had been looked after continuously for at least 12 months and were of school age, who missed a total of at least 25 days of schooling for any reason during the previous school year.	13.60%	7.23%	Performance is showing as good but note we are only half way through the academic year - forecast is for similar performance to last year.
	C20	162	<b>Reviews of child protection cases (KT)</b> - The percentage of child protection cases which should have been reviewed during the year that were reviewed.	96.20%	99.17%	Good performance. 1 review is known to be late.
	C21		<b>Duration on the Child Protection Register</b> - The percentage of children deregistered from the Child Protection Register during the year who had been on the Register continuously for two years or more.	21.90%	12.50%	Last year's poor performance was a reflection on difficulty in progressing CP plans. This situation arose due to low staffing stability and the consequent overriding need to ensure children remained safe by not de-registering prematurely. Performance has improved significantly due to greater team stability and careful management of CP cases.
	C23	163	<b>Adoptions of children looked after (KT)</b> - The number of looked after children adopted during the year as a percentage of the number of children looked after (excluding unaccompanied asylum seekers) who had been looked after for 6 months or more.	2.73%	8.41%	Huge turnaround in performance. There have been 3 further adoptions since end Feb taking Harrow well above statistical neighbour average. The newly established partnership with Coram and the work of Permanency Tracking Panel are yielding very good results.

D. Make a Positive Contribution	C64		<b>Timing of core assessments</b> - The percentage of Core Assessments that were completed within 35 working days of their commencement.	60.30%	76.04%	Performance has improved significantly due to reconfiguration of team and improved monitoring.
	C68		<b>Timeliness of reviews of Children looked after</b> - The percentage of children looked after cases which should have been reviewed during the year that were reviewed during the year.	93.3%	91.03%	Performance remains at a similar level to last year and is below what would be expected. Work is ongoing between social work teams and Children's Safeguarding and Review Unit to improve this position.
	A1	49	<b>Stability of placements of children looked after (KT)</b> - The percentage of children looked after with three or more placement moves in the year.	13.80%	8.78%	Very good performance
	D78		<b>Long term stability of CLA (2.5 years)</b> - The percentage of children aged under 16 who had been looked after continuously for at least 2.5 years, who were living in the same placement for at least 2 years, or are placed for adoption.	58.5%	66.04%	This indicator is currently unbanded but we have made improvement and are now in line with latest statistical neighbour average.
	B79		<b>Children aged 10-15 in foster placements or placed for adoption</b> - Of children aged at least 10 and under 16 looked after (excluding those placed with parents) the percentage who were in foster placements or placed for adoption.	63.9%	70.49%	This indicator is currently unbanded but we have made improvement. Action is being taken to maximise stability which should take us steadily towards the statistical neighbour average of around 80%.
	C18		<b>Final warnings/reprimands and convictions of CLA</b> - The percentage of children aged 10 or over who had been looked after continuously for at least 12 months, who were given a final warning/reprimand or convicted during the year for an offence committed whilst they were looked after, expressed as a ratio of the percentage of all children aged 10 or over given a final warning/reprimand or convicted for an offence in the police force area.	2.8%	0%	There have been no convictions or final warnings reprimands for CLA. The national bandings put this in the orange 'ask questions' category, because it is lower than expected - however this is clearly not poor performance.
	C63		<b>Participation of looked after children in reviews</b> - The number of children and young people who communicated their views for each of their statutory reviews in the year as a percentage of the number of children and young people who were looked after during the year for more than four weeks.	90.10%	98.49%	Very good performance - The new system, View Point, and efforts of teams involved have greatly enhanced performance.

## Guide to Key Performance Indicator bandings

Very Good
Good
Acceptable
Ask Questions
Investigate Urgently

CF/A1	Stability of placements of CLA	.	.	.	.	0<16.01	.	.	16.01<20	20<=100
CF/A3	Re-registrations on the CPR	0<3	3<6	6<8	8<10	10<15	15<17.21	17.21<20	20<24	24<=100
CF/B79	CLA - foster/placed for adoption <b>NEW</b>	unbanded for 2005-06								
CF/C18	Final warnings/reprimands and convictions of CLA	.	0<1	1<3	.	.	.	.	3+	.
CF/C19	Health of children looked after	0<50	50<60	60<70	70<80	80<=100	.	.	.	.
CF/C20	Reviews of child protection cases	0<92.5	92.5<95	95<97.5	97.5<100	100	.	.	.	.
CF/C21	Duration on the CPR	.	.	.	.	.	0<10	10<15	15<20	20<=100
CF/C23	Adoptions of children looked after	0<3	3<6	6<7	7<8	8<25	.	.	25<=100	.
CF/C24	Children looked after absent from school	.	.	.	.	0<5	5<10	10<15	15<20	20+
CF/C64	Timing of core assessments	0<60	60<70	70<75	75<80	80<=100	.	.	.	.
CF/C68	Timeliness of reviews for LAC	0<80	80<85	85<90	90<95	95<=100				
CF/D78	Long term stability of CLA <b>NEW</b>	unbanded for 2005-06								





Committee:	<b>Corporate Parenting Panel</b>
Date:	<b>14<sup>th</sup> April 2008</b>
Subject:	<b>Information Report – Education Champions for Children Looked After</b>
Responsible Officer:	<b>Paul Clark</b>
Portfolio Holder:	<b>Cllr Janet Mote</b>
Exempt:	<b>No</b>
Enclosures:	<b>None</b>

## **Section 1 – Summary**

### **FOR INFORMATION**

- Report on a good practice scheme developed by L.B. Barnet whereby senior managers take on the role of champions for a cohort of children looked after to ensure that every effort is made to maximise their educational potential
- Report on plans to scope the potential for developing such or similar scheme in Harrow

## **Section 2 – Report**

- The chances of a young person who is looked after passing one GCSE is approximately half that of a young person who is not looked after.

- In 2006-2007 9% of 16year old Children Looked After in Harrow achieved 5 A-C GCSEs. This compares with nearly 68% of children who are not looked after.
- The experience in Barnet was that the young people themselves did not have high expectations of themselves, nor did their carers, teachers and other professionals.
- It was in response to this and the general lack of an upward turn in the educational achievement of their children looked after that prompted Barnet to develop their programme of education champions.
- The role of the champion was to mirror that of a “pushy” parent- to do all that was possible behind the scenes to support their allocated child/young person looked after. This may include talking to Social Workers, other professionals, influencing housing and so on.
- The champion does not meet the child/young person. Barnet use the analogy of Magwitch, the Dickens’s character who was the secret benefactor to the hero, Pip.
- The Chief Executive and Director, together with 35 other top managers participated. The programmed then involved other key partners such as heads of schools.
- The scheme has evolved over time. The programmed is reserved for children/young people looked after for at least a year and who are facing key transitions – moving into secondary school, choosing GCSE options, the GCSE years and moving to further education
- The results have been very encouraging. From 2004, when the scheme was first introduced, to the end of 2006, the proportion of children looked after who sat at east one GCSE increased from 45% to 77%. The percentage who achieved 5 or more A-C rose from 6% to 23%
- The other benefits included a better understanding by senior managers and other partners of the difficulties faced by Social Workers and carers
- Social Workers work together and feel more confident about working with senior managers
- There is more of a shared commitment to the difficulties shared by children looked after
- The corporate parenting manager is willing to meet with Corporate Parenting

### **Section 3 – Further Information**

- The Barnet champion programme is complemented by a fully staffed multi agency team, which works closely with social care and their partners. The upturn in performance is seen as a combination of both developments.
- Harrow is developing a virtual children looked after team which has been tasked by the Life Chances Forum to look at how we can improve the educational achievement of children looked after
- The Life Chances Forum will consider the benefits of the Barnet programme and will report back to the December Panel

### **Section 4 - Contact Details and Background Papers**

Contact: Andreas Kyriacou, Senior Coordinator, Children Looked After  
0208 424 7642  
andreas.kyriacou@harrow.gov.uk

This page is intentionally left blank